



**REGIONAL SPECIALISED METEOROLOGICAL CENTRE-TROPICAL CYCLONES, NEW DELHI
TROPICAL WEATHER OUTLOOK**

DEMS-RSMC TROPICAL CYCLONES NEW DELHI DATED 29.09.2024

TROPICAL WEATHER OUTLOOK FOR NORTH INDIAN OCEAN (THE BAY OF BENGAL AND THE ARABIAN SEA) VALID FOR NEXT 168 HOURS ISSUED AT 0600 UTC OF 29.09.2024 BASED ON 0300 UTC OF 29.09.2024.

BAY OF BENGAL:

SCATTERED LOW AND MEDIUM CLOUDS WITH EMBEDDED INTENSE TO VERY INTENSE CONVECTION LAY OVER SOUTH BAY OF BENGAL. SCATTERED LOW AND MEDIUM CLOUDS WITH EMBEDDED MODERATE TO INTENSE CONVECTION LAY OVER NORTHEAST BAY OF BENGAL OFF BANGLADESH COAST, SOUTH ANDAMAN SEA AND ISOLATED WEAK TO MODERATE CONVECTION LAY OVER NORTH ANDAMAN SEA.

***PROBABILITY OF CYCLOGENESIS (FORMATION OF DEPRESSION) DURING NEXT 168 HRS:**

24 HOURS	24-48 HOURS	48-72 HOURS	72-96 HOURS	96-120 HOURS	120-144 HOURS	144-168 HOURS
NIL	NIL	NIL	NIL	NIL	NIL	NIL

***NOTE: EVERY 24HR FORECAST IS VALID UPTO 0300 UTC (0830 IST) OF NEXT DAY**

ARABIAN SEA:

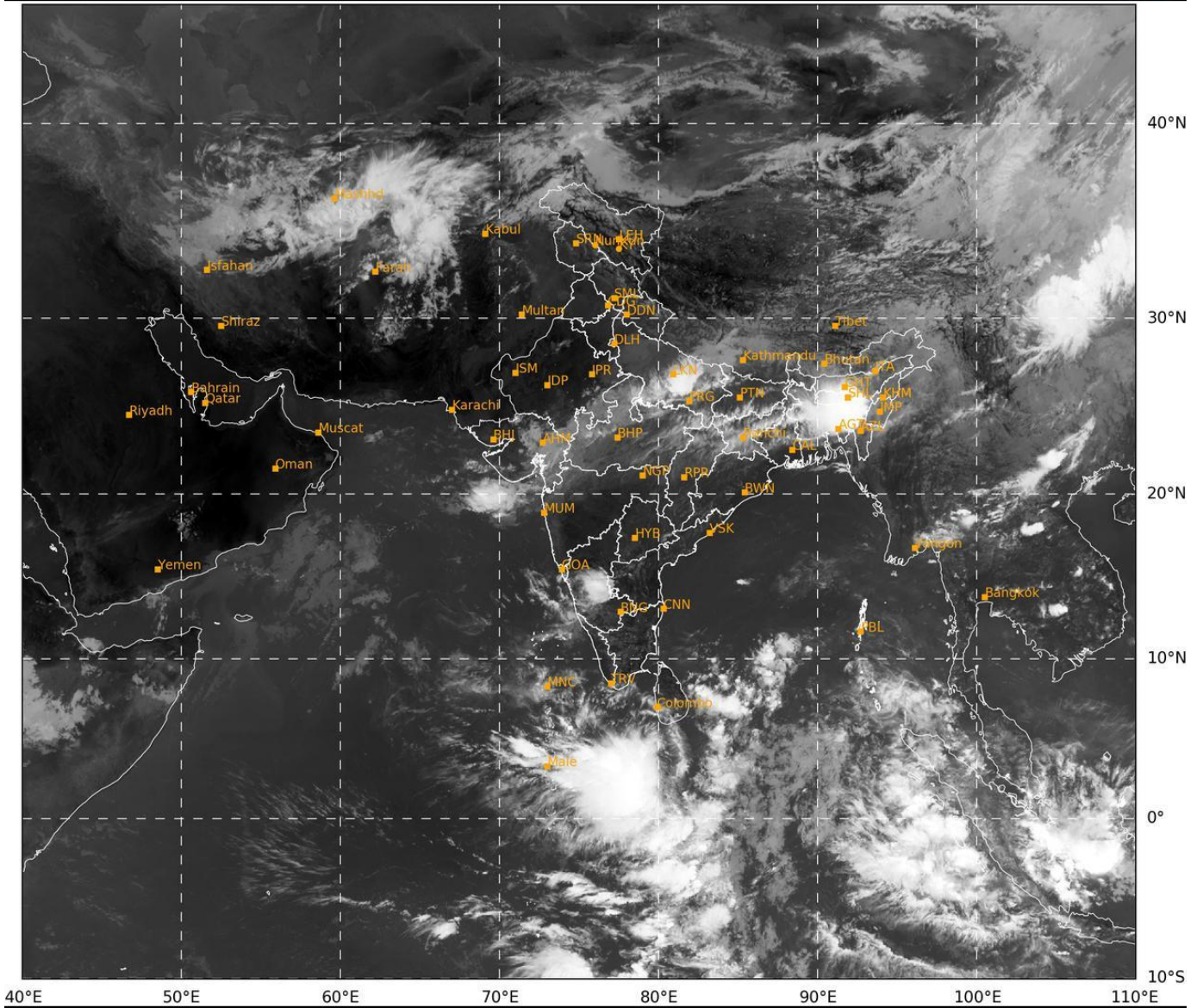
SCATTERED LOW AND MEDIUM CLOUDS WITH EMBEDDED INTENSE TO VERY INTENSE CONVECTION LAY OVER COMORIN AREA, ADJOINING EQUATORIAL INDIAN OCEAN (MINIMUM CTT MINUS 80⁰-93⁰C). SCATTERED LOW AND MEDIUM CLOUDS WITH EMBEDDED ISOLATED MODERATE TO INTENSE CONVECTION OVER EAST ARABIAN SEA LAKSHADWEEP ISLANDS & MALDIVES AREA AND ISOLATED WEAK TO MODERATE CONVECTION LAY OVER WEST ARABIAN SEA, GULF OF KUTCH & GULF OF CAMBAY.

***PROBABILITY OF CYCLOGENESIS (FORMATION OF DEPRESSION) DURING NEXT 168 HRS:**

24 HOURS	24-48 HOURS	48-72 HOURS	72-96 HOURS	96-120 HOURS	120-144 HOURS	144-168 HOURS
NIL	NIL	NIL	NIL	NIL	NIL	NIL

***NOTE: EVERY 24HR FORECAST IS VALID UPTO 0300 UTC (0830 IST) OF NEXT DAY**

REMARKS: NIL



Cloud distribution: (a) Isolated: <25%, Scattered:25-50%, Broken: 51-75%, Solid:>75%, Convection Intensity: (a) Weak: Cloud Top Temperature (CTT) >-25°C, (b) Moderate: CTT: - 25°C to -40°C, (c) Intense: CTT: - 41°C to -70°C and (d) Very Intense: : Less than -70°C
PROBABILITY OF CYCLOGENESIS (FORMATION OF DEPRESSION):NIL: 0%, LOW: 1-33%, , MODERATE: 34-66% AND HIGH: 67-100%
This is a guidance Bulletin for WMO/ESCAP Panel Member countries. Visit respective National websites for Country specific Bulletins